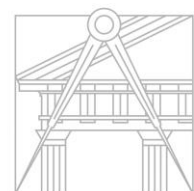


Modelação e Visualização Tridimensional em Arquitectura



UNIVERSIDADE
DE LISBOA



FACULDADE DE ARQUITETURA
UNIVERSIDADE DE LISBOA

Mestrado Integrado em Arquitectura
Ano Lectivo 2022-2023 2º Semestre
Docente - Nuno Alão 3º Ano

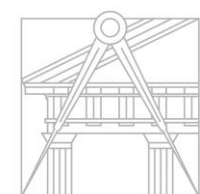
20201329



CATARINA FREITAS

U LISBOA

UNIVERSIDADE
DE LISBOA



FACULDADE DE ARQUITETURA
UNIVERSIDADE DE LISBOA

MVTA

Mestrado Integrado em Arquitectura
Ano Lectivo 2022-2023 2º Semestre
Docente - Nuno Alão 3º Ano

Museu de Arte de São Paulo – Arq. Lina Bo Bardi

Trabalho de Grupo – Anastasia Burneuskaya, 20201260 / Catarina Freitas, 20201329 / Hélio Tavares, 20201275 / Margarida Terras, 20201228 / Rita Valadas, 20201246
– Turma 3F

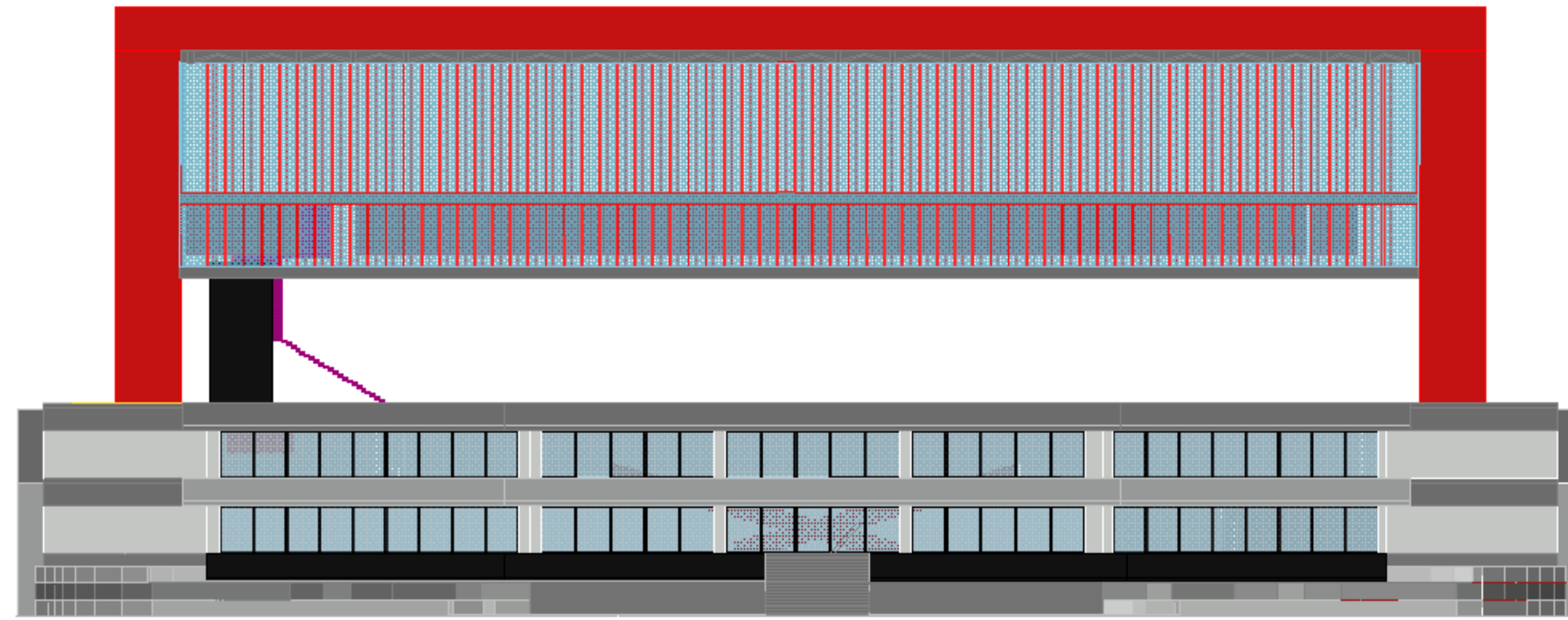
ÍNDICE

- Modelo Tridimensional
- Plantas dos Pisos Subterrâneos
- Plantas dos Pisos Térreos e Elevados
- Cortes Transversal e Longitudinal
- Axonometria dos Pisos Subterrâneos
- Axonometria dos Pisos Térreos e Elevados

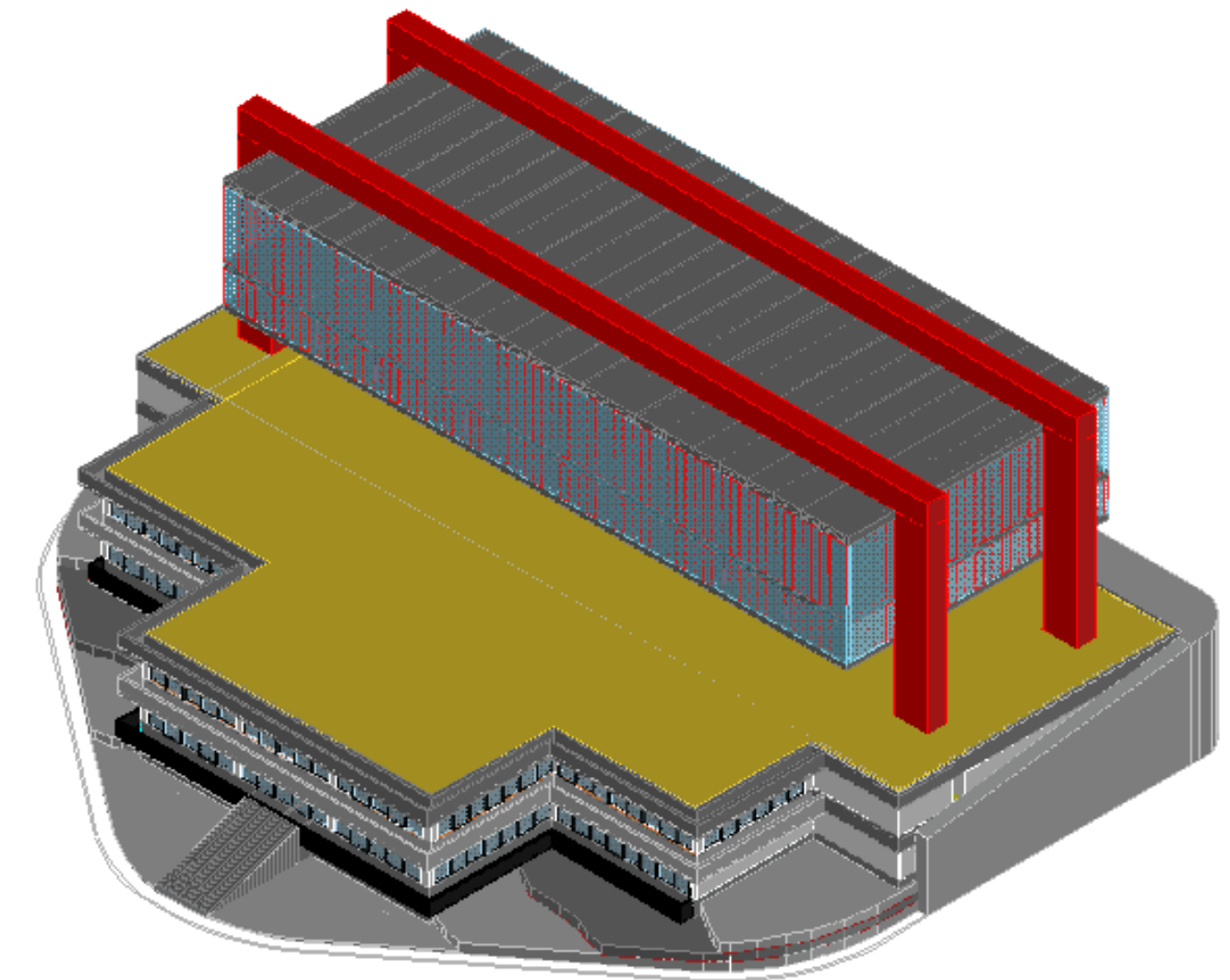
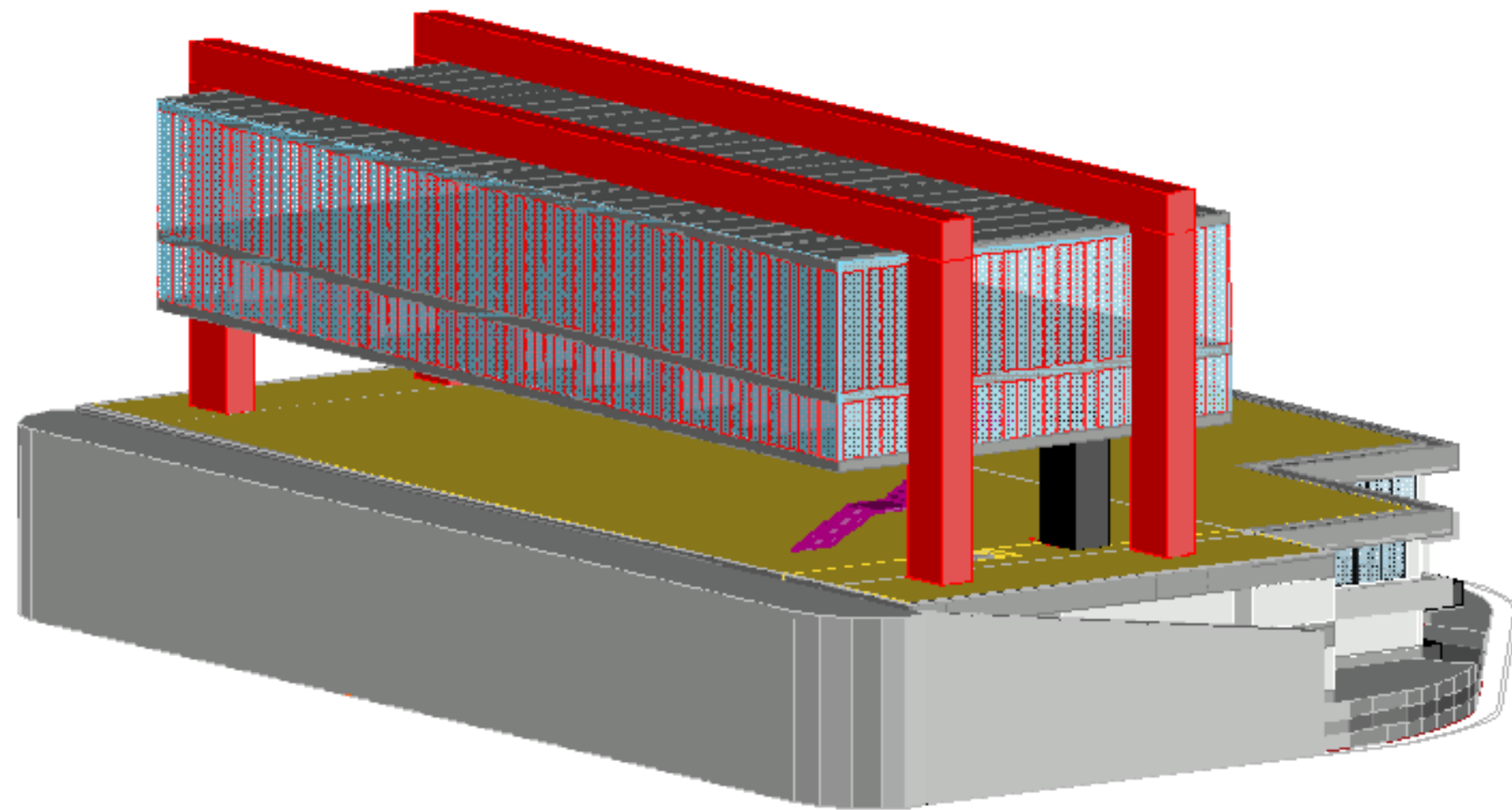
Trabalho de Grupo – Anastasia Burneuskaya, 20201260 / Catarina Freitas, 20201329 / Hélio Tavares, 20201275 / Margarida Terras, 20201228 / Rita Valadas, 20201246 –
Turma 3F



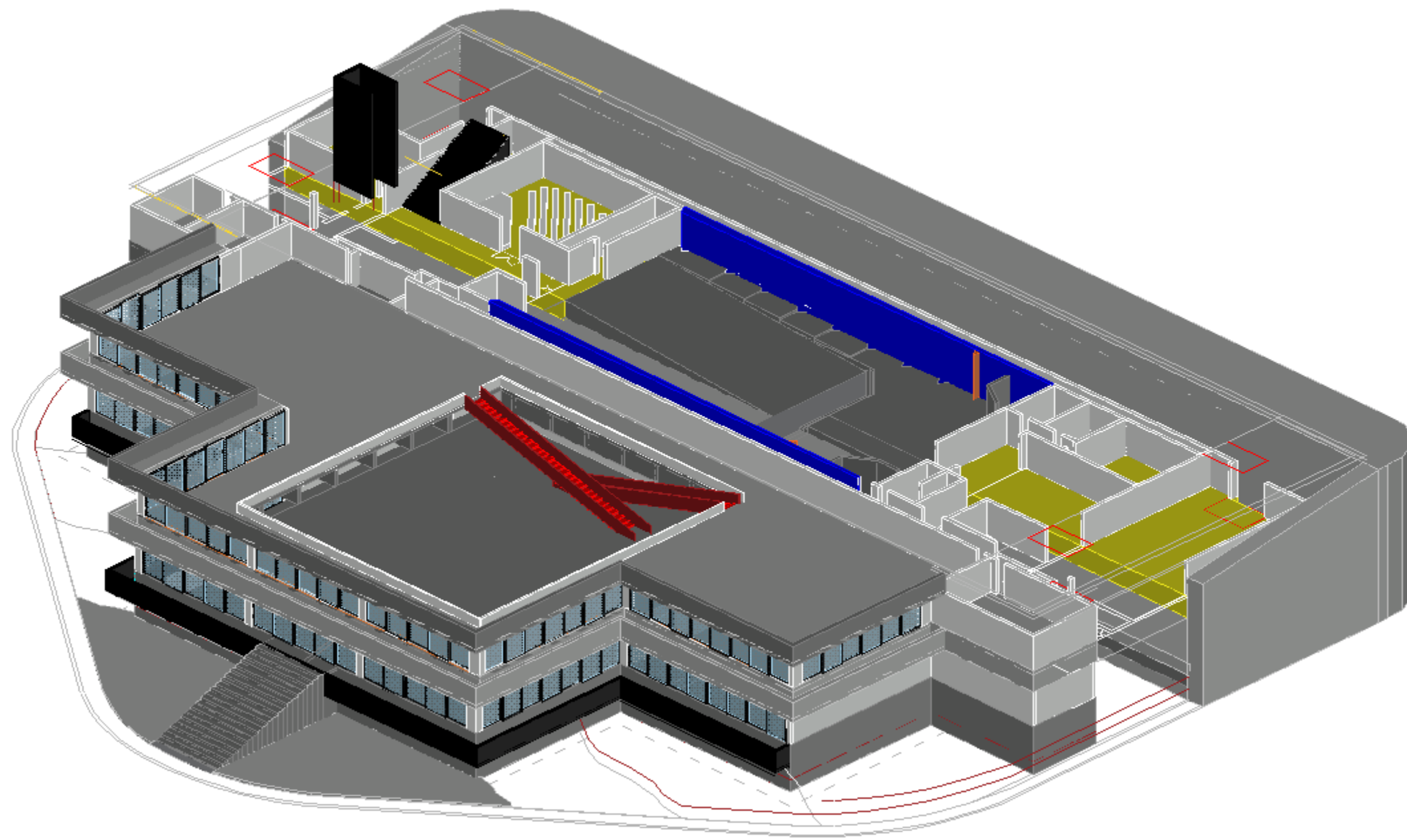
- Museu de Arte de São Paulo – Arq. Lina Bo Bardi



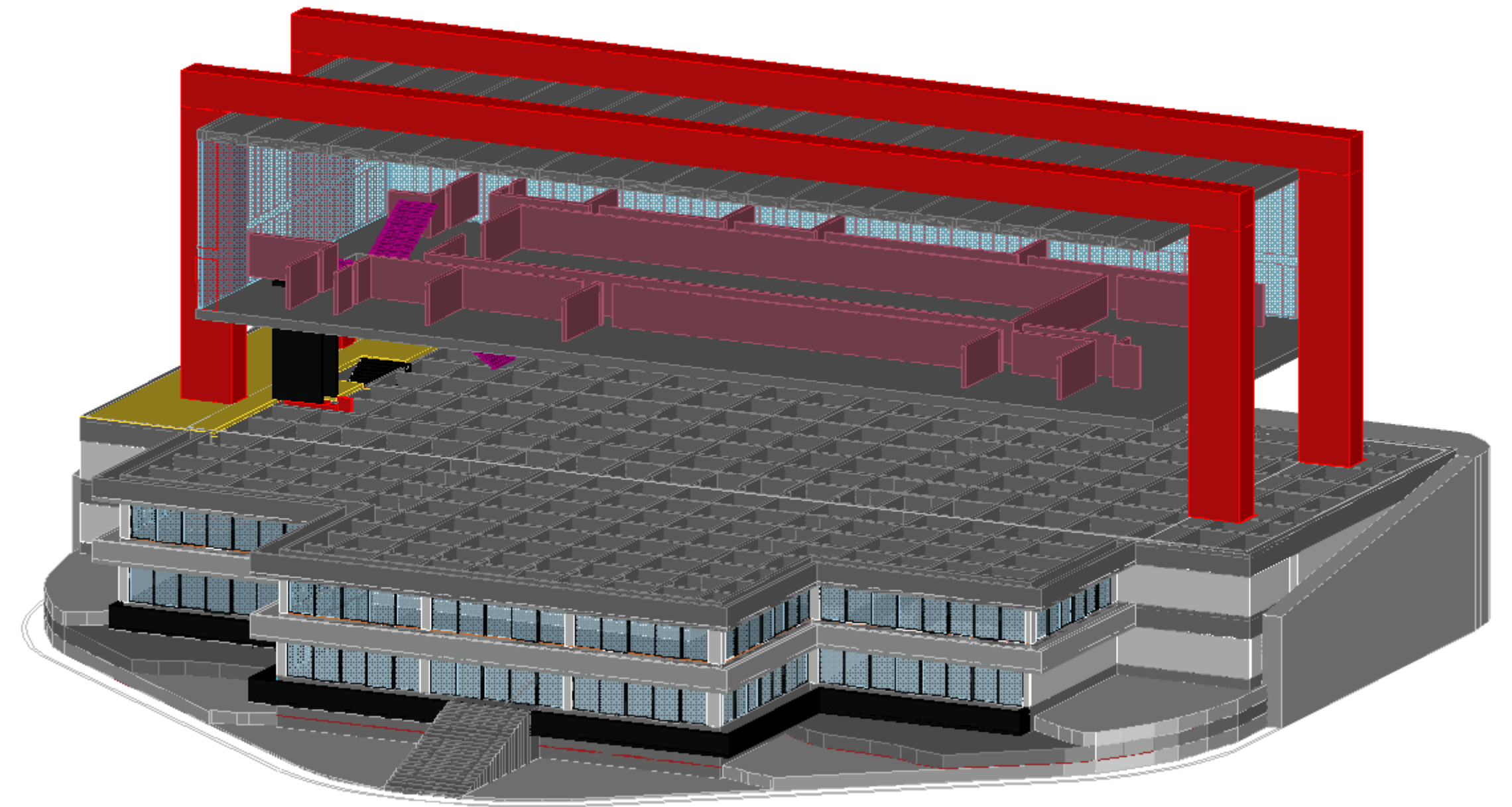
Vista de Frente



- Modelo Tridimensional - Exterior

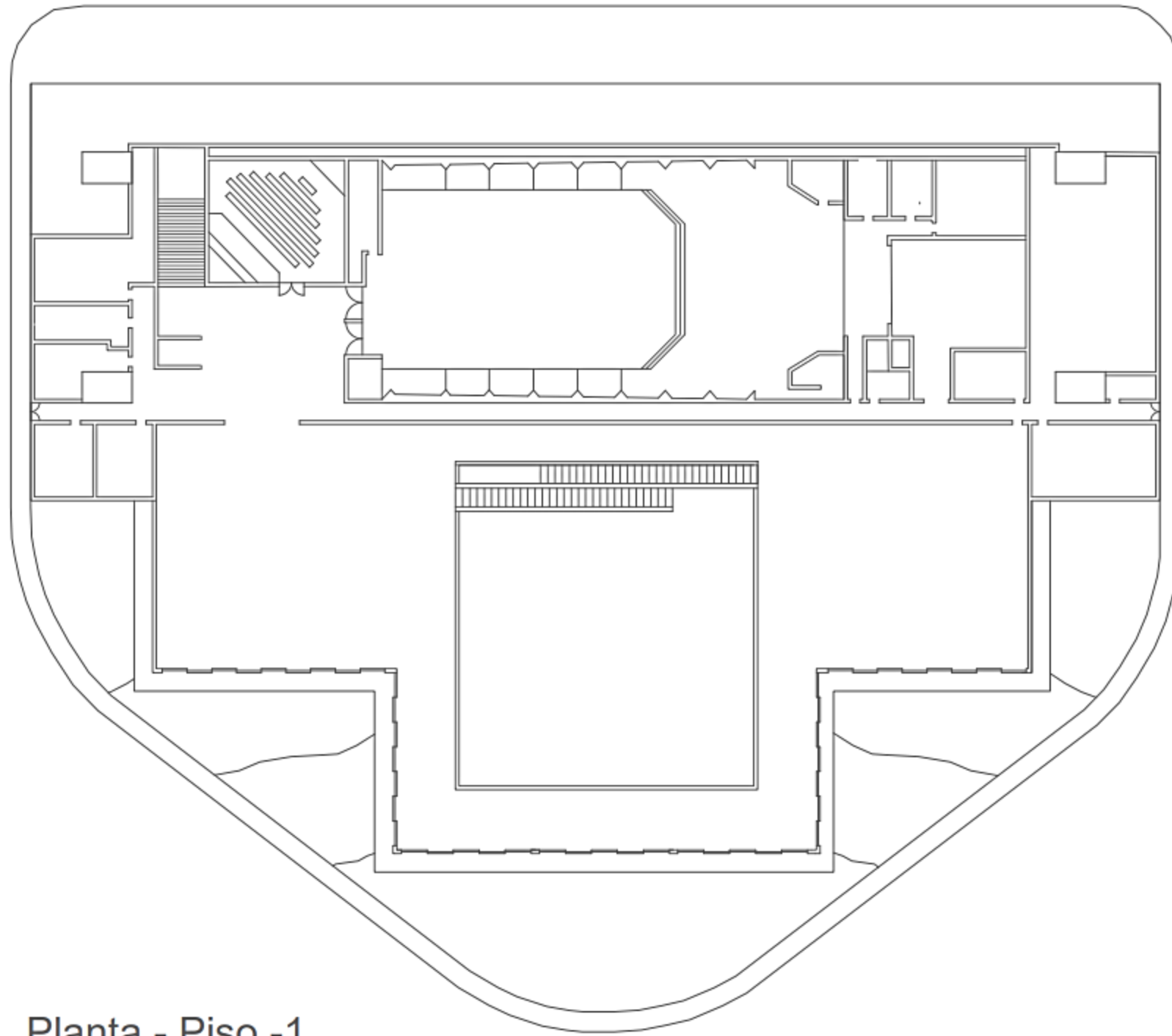


Vista do Piso -1

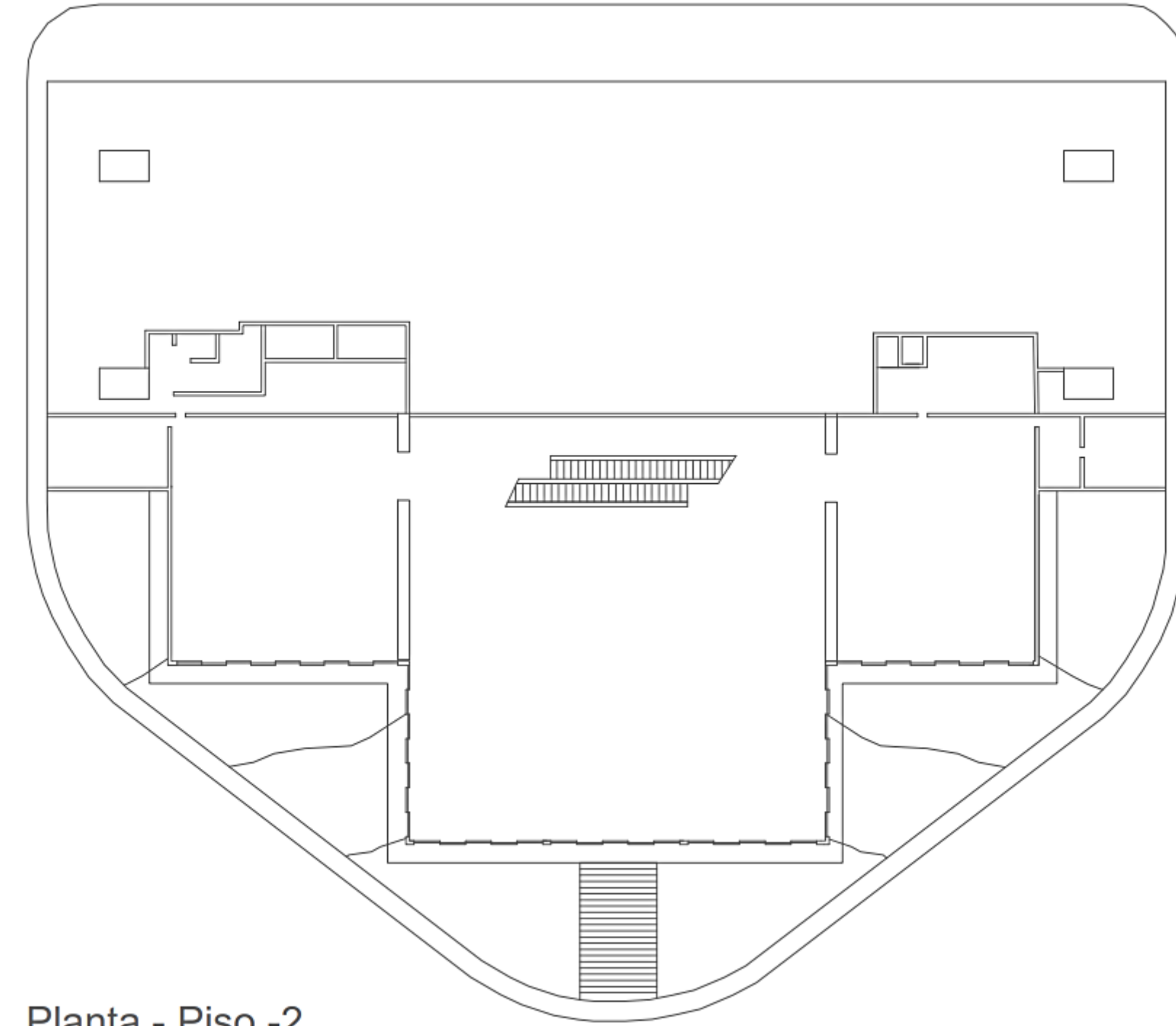


Vista do Piso 1

- Modelo Tridimensional - Interior

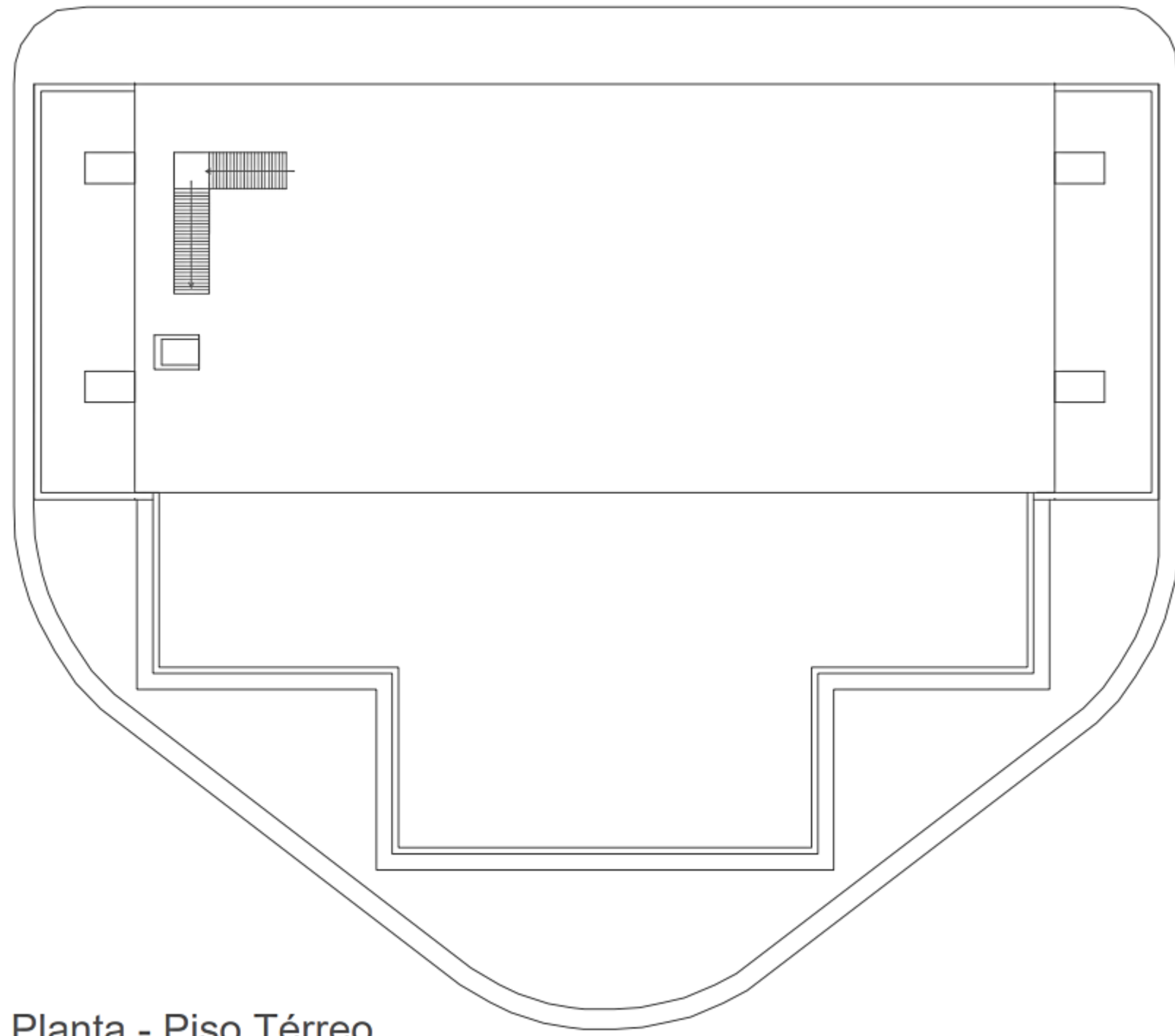


Planta - Piso -1

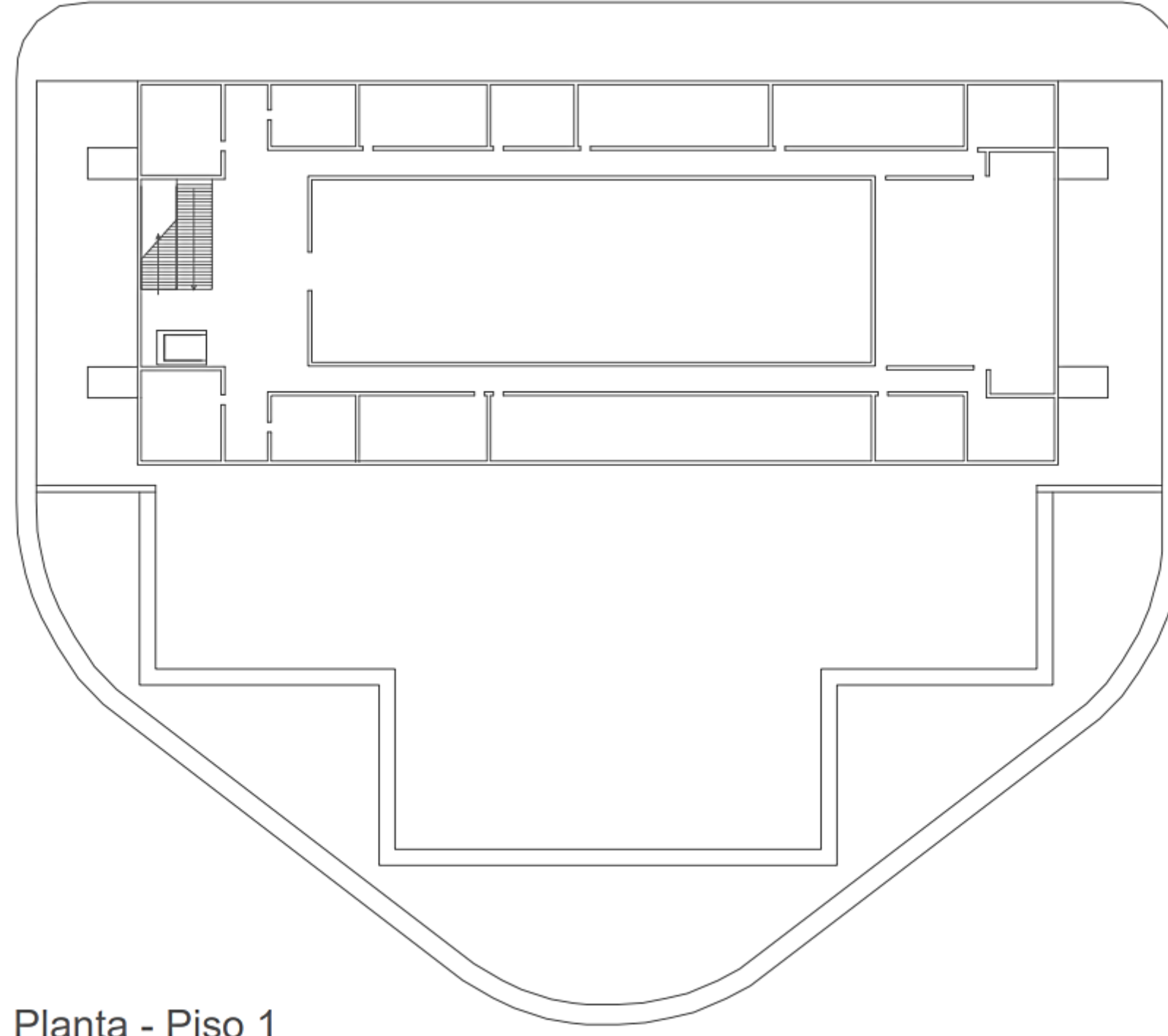


Planta - Piso -2

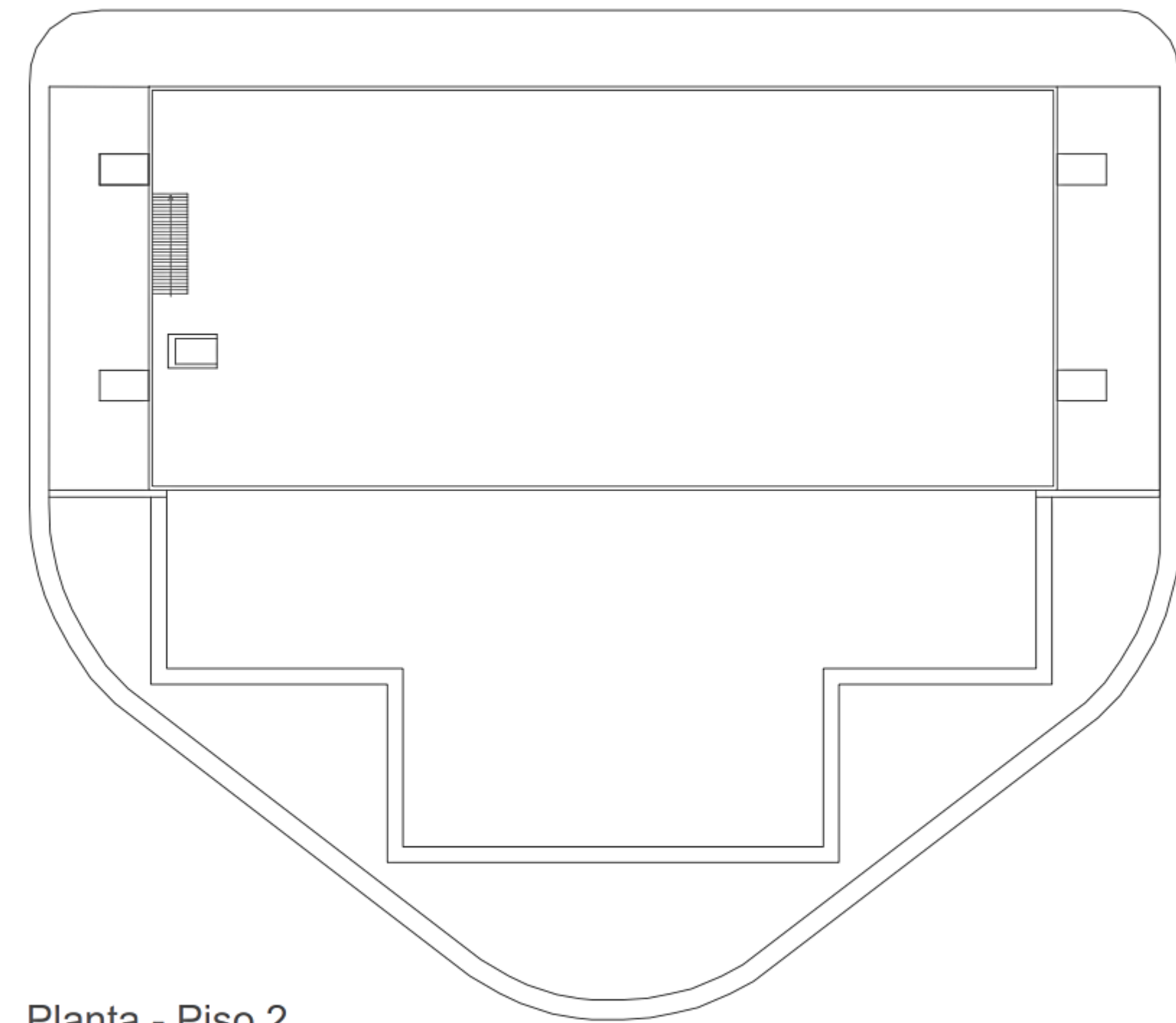
- Plantas dos Pisos Subterrâneos



Planta - Piso Térreo

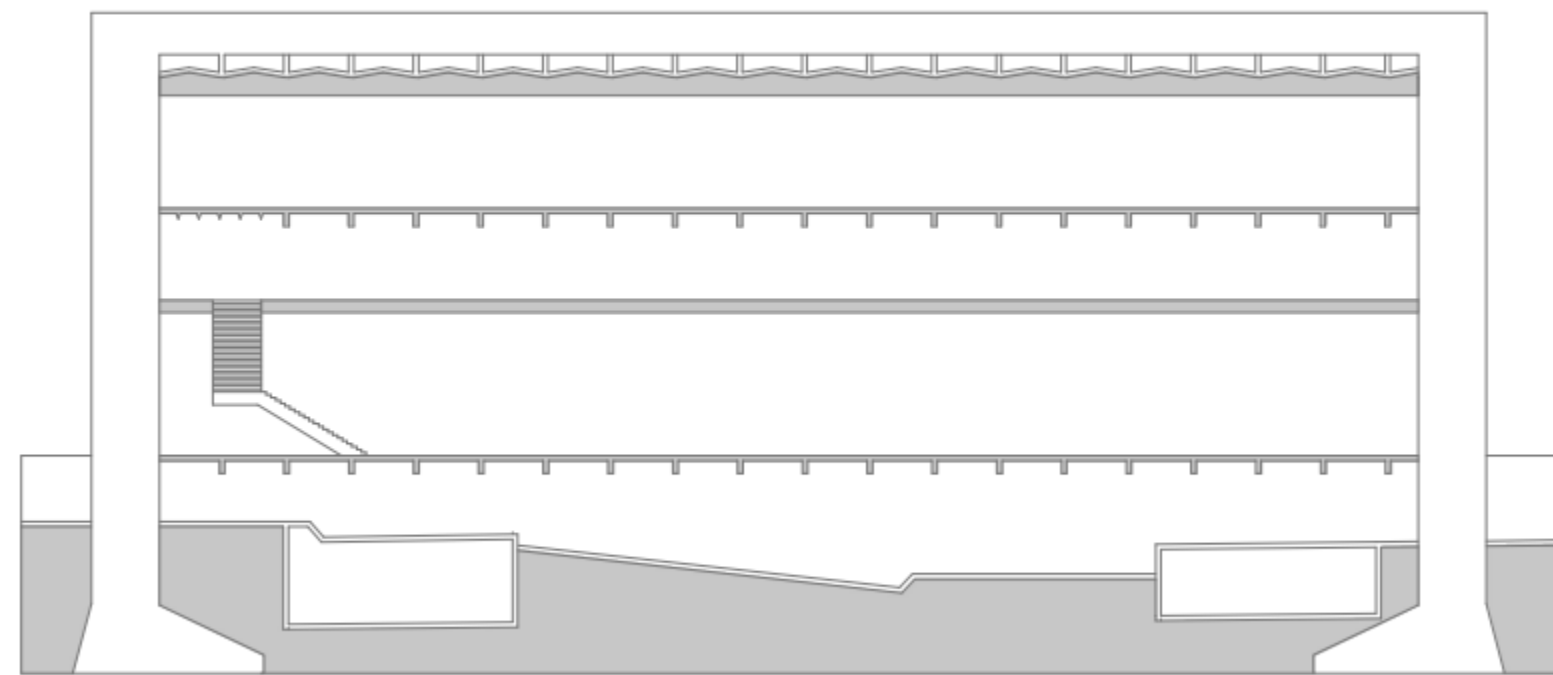


Planta - Piso 1

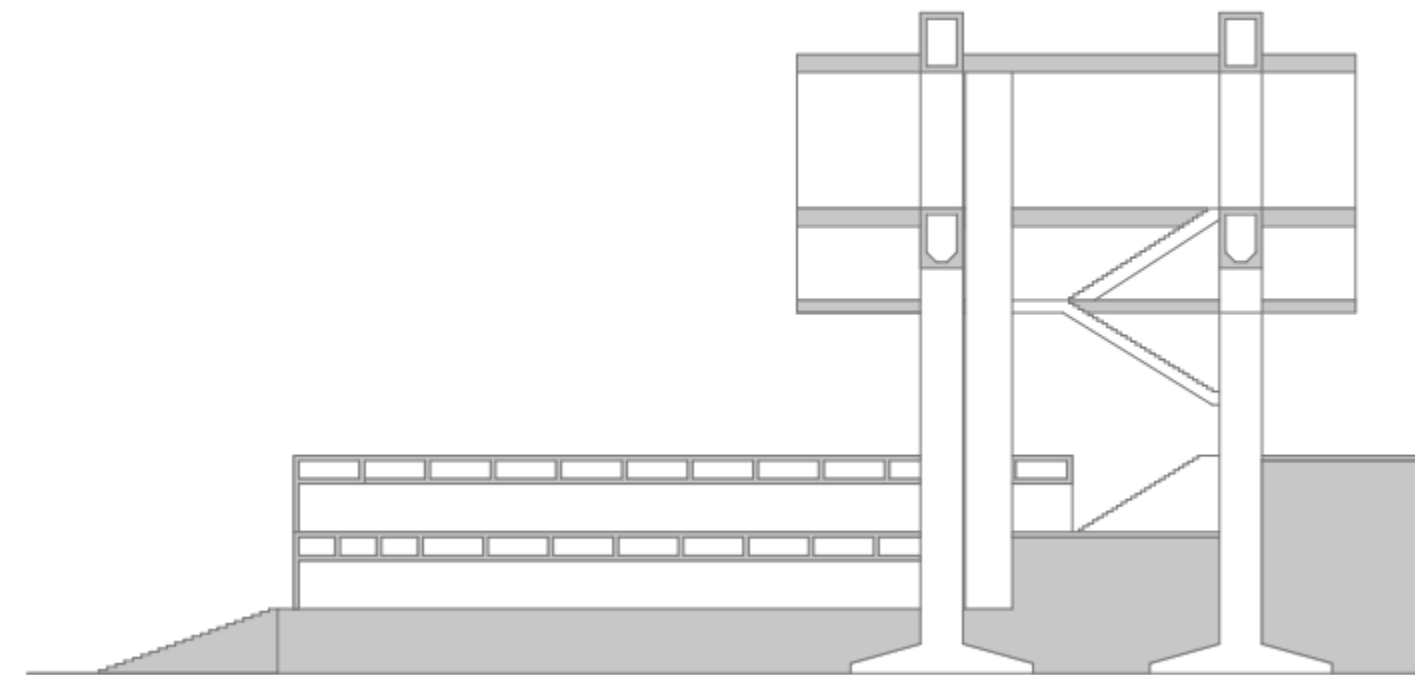


Planta - Piso 2

- Plantas dos Pisos Térreos e Elevados

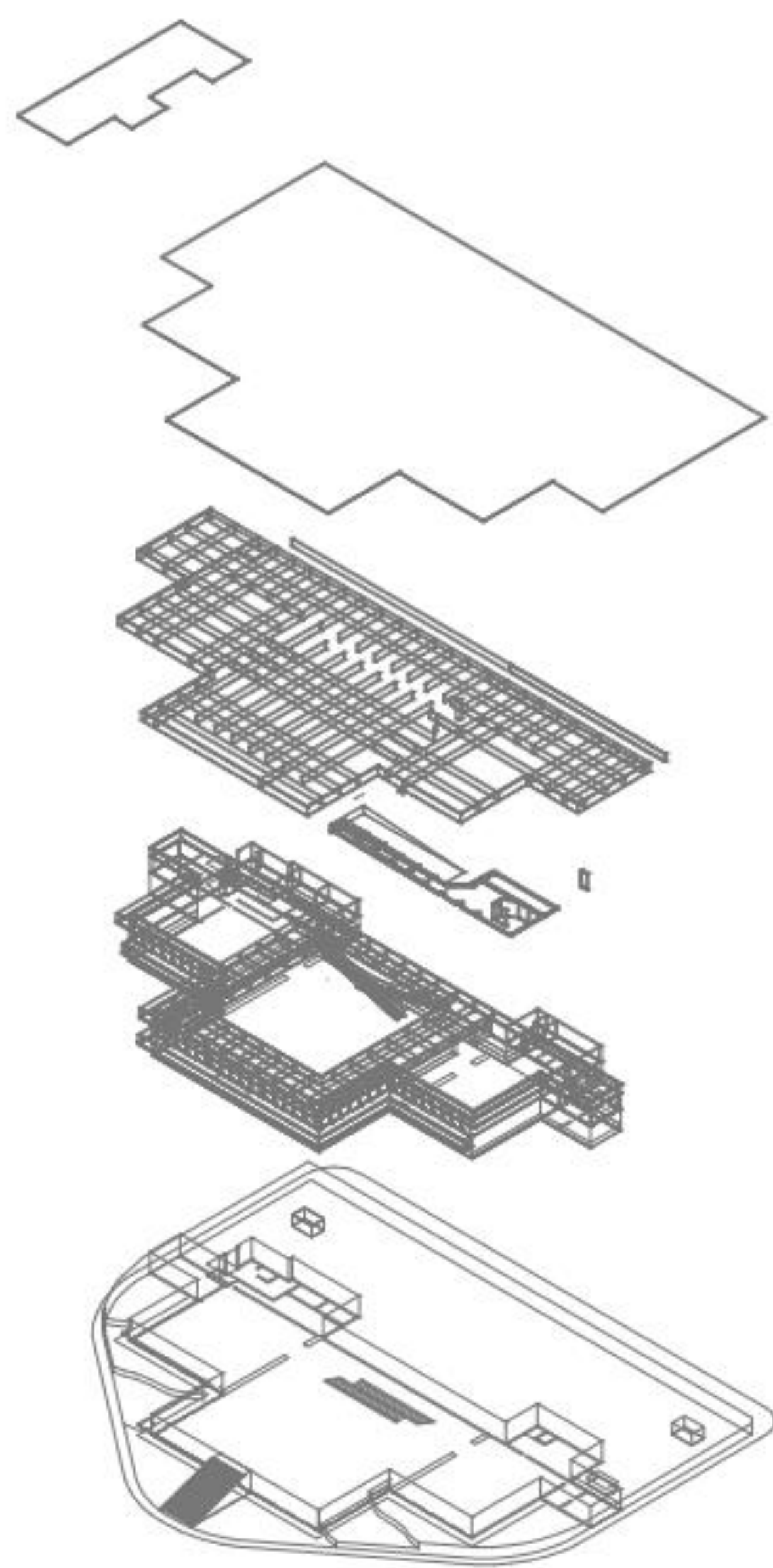


Corte Longitudinal

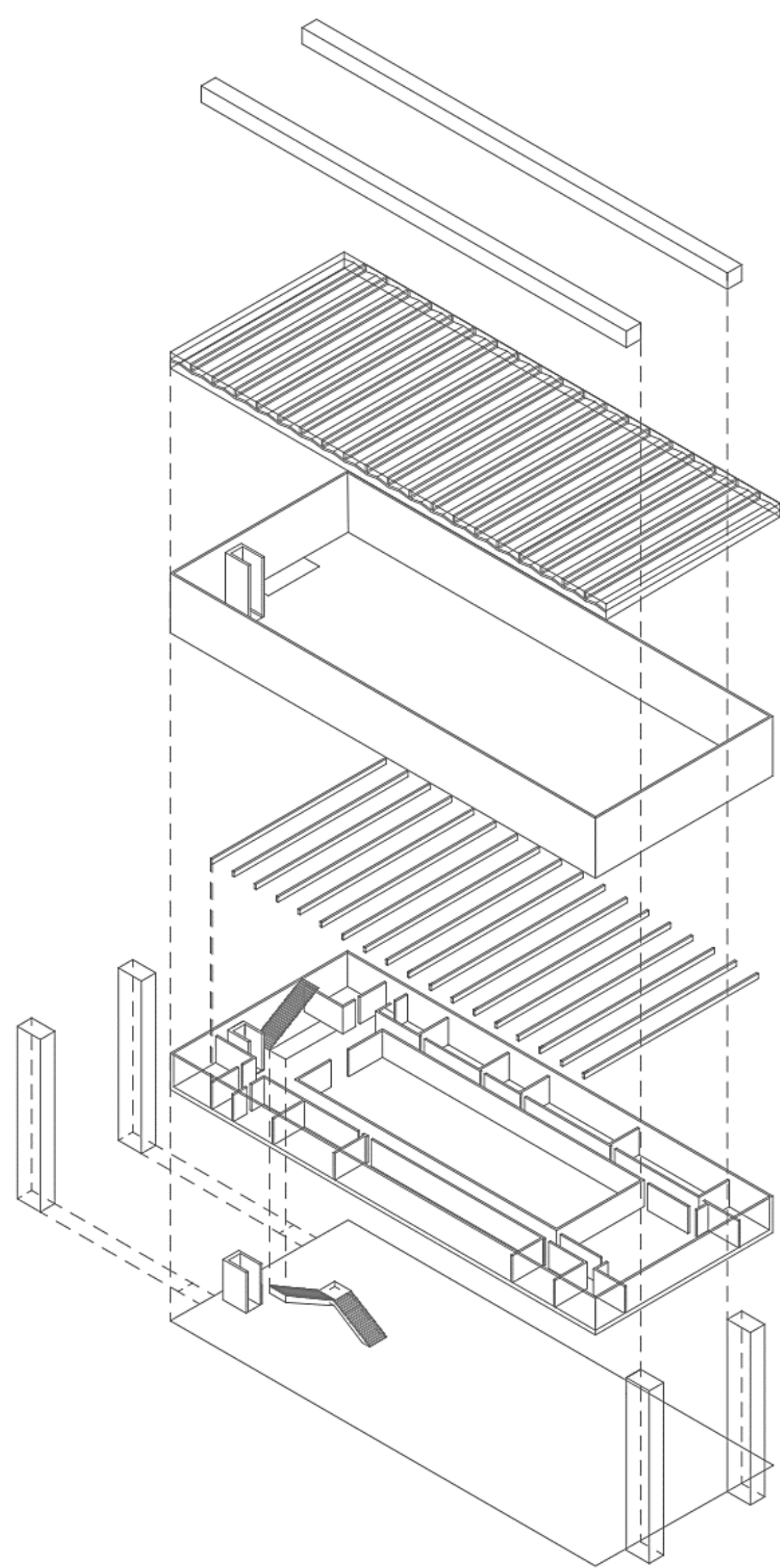


Corte Transversal

- Cortes



- Axonometria dos Pisos Subterrâneos



- Axonometria dos Pisos Térreo e Elevados